



Mouse anti Human IgG4 Monoclonal Antibody

Alternative Name(s): Fc fragment of IgG4; CD64

Order Information

- **Description:** IgG4 (Hu)
- **Catalogue:** 605-900
- **Lot:** See label
- **Size:** 100ug/200ul
- **Host:** Mouse
- **Clone:** HP6025
- **Application:** IHC(P), WB, ELISA, FC
- **Reactivity:** Hu

ANTIGEN PREPARATION

Human immunoglobulin IgG4

BACKGROUND

This monoclonal anti-human IgG4 HP6025 antibody is specific for an epitope on the pFc' region of IgG4. The antibody does not react with IgG1, IgG2 and IgG3. Of the five immunoglobulin isotypes, immunoglobulin G (IgG) is most abundant in human serum. The four subclasses, IgG1, IgG2, IgG3, and IgG4, which are highly conserved, differ in their constant region, particularly in their hinges and upper CH2 domains. IgG4 antibodies have unique structural and functional properties and undergo 'half-antibody exchange' in vivo, resulting in recombined antibodies composed of two different binding specificities. The production of IgG4 antibodies appears to be driven in part by T helper 2 (Th2) cytokines that mediate allergic responses and IgE production. Although serum IgG4 levels in healthy individuals vary significantly, data from multiple sclerosis (MS) patients suggest tight regulation of individual IgG4 levels over time. IgG4-RSD represents a diverse group of clinical disorders unified by elevated IgG4 levels and specific histopathologic findings.

PURIFICATION

The mouse IgG is purified by Protein A-Affinity Chromatography according to Isotyping

FORMULATION

This affinity purified antibody is supplied in sterile Phosphatebuffered saline (pH7.2) containing antibody stabilizer

SPECIFICITY

This antibody recognizes human IgG4 (Hu) protein. The other species are not tested.

STORAGE

The antibodies are stable for 24 months from date of receipt when stored at -20oC to -70oC. The antibodies can be stored at 2oC-8oC for three month without detectable loss of activity. Avoid repeated freezing-thawing cycles.

APPLICATIONS/SUGGESTED WORKING DILUTIONS*

- Western Blot: 0.1-1 µg/ml
- ELISA: 0.01-0.1 µg/ml
- Immunoprecipitation: 2-5 µg/ml
- IHC: 2-10 µg/ml
- Flow cytometry: Not tested
- Molecular Weight: 146.0
- Positive Control: Kidney Tissue
- Cellular Location: Cell Membrane

*Optimal dilutions should be determined by researchers for the specific applications.

FOR RESEARCH USE ONLY.

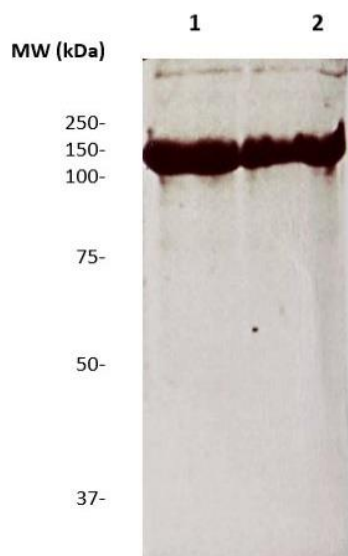
AbboMax, Inc 2528 Qume Drive, Suite 8, San Jose, California 95131, USA
1 408-573-1898 (Tel). 1 408-573-1858 (Fax). www.abbomax.com info@abbomax.com



FOR RESEARCH USE ONLY.

AbboMax, Inc 2528 Qume Drive, Suite 8, San Jose, California 95131, USA
1 408-573-1898 (Tel). 1 408-573-1858 (Fax). www.abbomax.com info@abbomax.com

DATA ATTACHMENTS



Western Blot: The non-denatured IgG4 protein (10 ug/lane) immunoblotted by mouse anti IgG4 (Cat# 605-900) at 1:100. Observed a major immunoreactive band at molecular weight ~150 kDa.

REFERENCES

FOR RESEARCH USE ONLY.

AbboMax, Inc 2528 Qume Drive, Suite 8, San Jose, California 95131, USA
1 408-573-1898 (Tel). 1 408-573-1858 (Fax). www.abbomax.com info@abbomax.com